

FUN WITH POLAR COORDINATES

BIRD'S EYE & WORM'S EYE VIEWS

You need to start with a perfectly level 360 degree panorama. The best way to do this is by using a tripod with a spirit level. However, with a bit of care and some fiddling you can get close with a hand held pano.

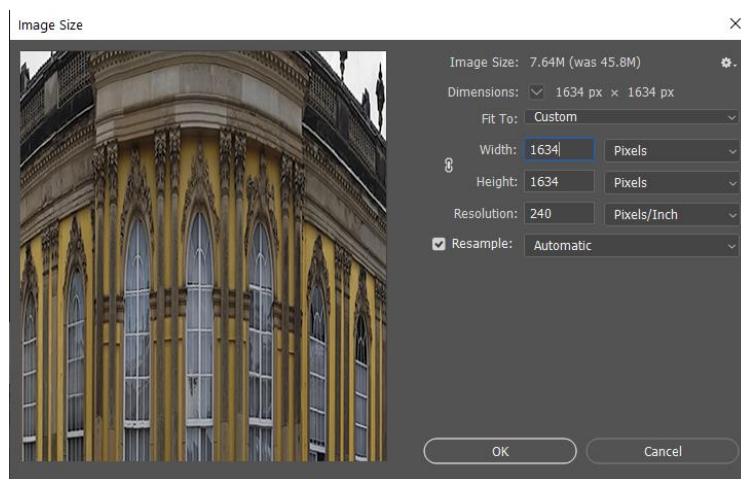
Start by taking a panorama covering about 380 degrees. So that the two ends overlap. Try to get the overlap in an area with as little detail as possible. You will probably find that one end is a little higher than the other. If it's not too far out you can use Transform > Distort > Skew to fix it.

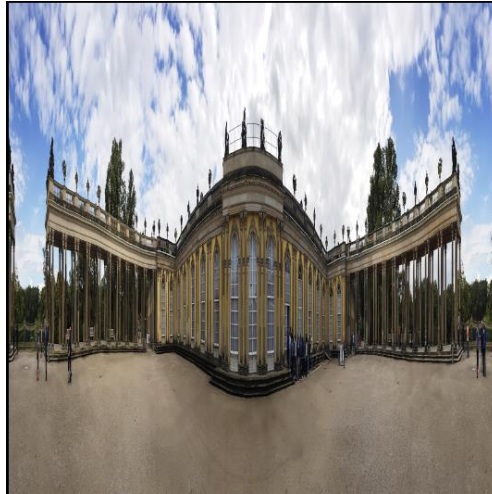


Now crop the image to 360 degrees so that the ends will meet exactly.



Now make the image perfectly square. Go to 'Image Size', unlink the height and width and set the width to the same size as the height.





Now apply Filter > Distort > Polar Coordinates and select 'Rectangular to Polar'



If you want the sky on the outside, simply rotate the image 180 degrees before applying polar coordinates.



To tidy it up, use the elliptical selection tool to select the outside of the image and fill it with black. Hold down Alt and Shift to select a perfect circle from the centre point.

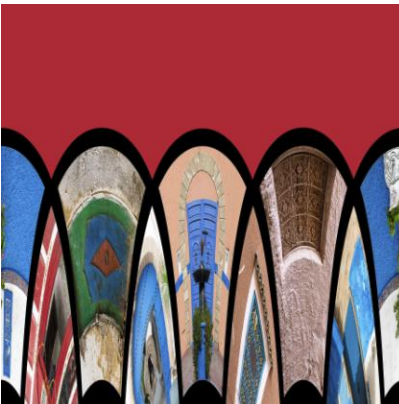


'FLORAL VIEW'

Make a 3 x 3 grid of colourful images. The easiest way to do this is using Lightroom's 'Print single image / contact sheet'. The central image is best made a solid colour.



Now apply polar coordinates, but select 'Polar to Rectangular'.



Turn the image through 180 degrees and again apply Polar Coordinates, Rectangular to Polar.



You can try the same procedure with a 5 x 5 grid:

